

## Vegetable Washer Tilting Basket Vegetable Washer 10/40kg

ITEM # \_\_\_\_\_

MODEL # \_\_\_\_\_

NAME # \_\_\_\_\_

SIS # \_\_\_\_\_

AIA # \_\_\_\_\_



660034 (LV300R)

Tilting Basket Vegetable  
Washer Kg 10/40 - 300 liter  
well

### Short Form Specification

Item No. \_\_\_\_\_

Made from 304 AISI stainless steel. Double inclined well bottom to allow automatic cleaning. Washing system by water vortex; multiple diffuser for uniform water vortex; automatic water filling. The lifting of the basket at the end of the washing cycle is achieved by a reliable and safe linear motor controlled by double push button with alarm. IP25 water protection.

Well capacity: 300 lt. Load per cycle: 10 kg (light vegetables); 40 kg (heavy vegetables). Cycle duration: 2-3 min.

### Main Features

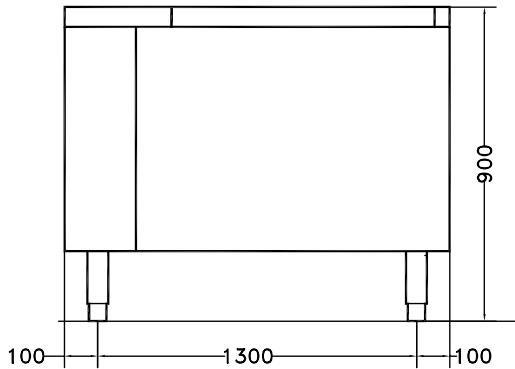
- Double inclined well bottom to allow automatic cleaning of the unit.
- Washing well shaped to achieve an efficient water vortex.
- Basket lifting at the end of the cycle achieved by means of a linear motor controlled by a double push button with alarm.
- "Soft-action" manual ball valve regulates the wash water loading and pressure.
- Multiple diffuser to uniform water vortex and a solenoid valve to expedite water loading and drainage.
- Simple control panel with emergency stop an acoustic alarm switch.
- Cycle duration of 2 to 3 minutes.
- Mounted on adjustable stainless steel legs.
- IP25 protection against water jets, solid objects and small animals (larger than 6 mm).

### Construction

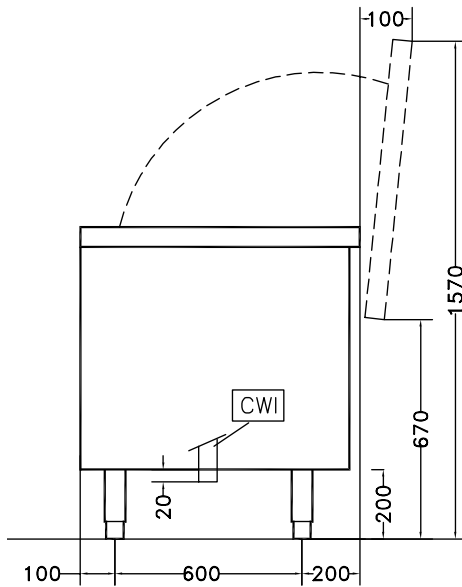
- 304 AISI stainless steel construction throughout.
- Wells to have a capacity of 10 kg of light vegetables or 40 kg of heavy vegetables per cycle.

APPROVAL: \_\_\_\_\_

Front

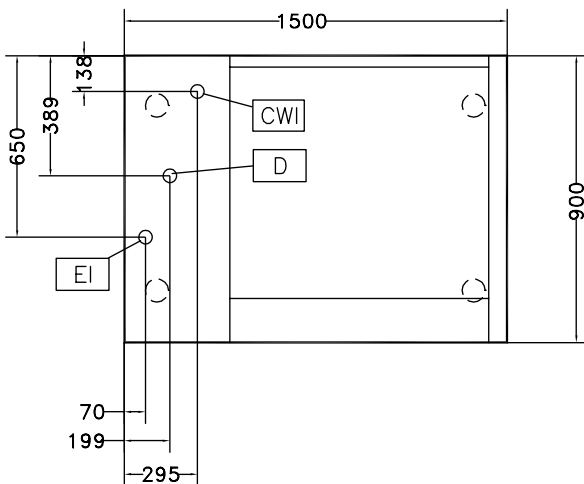


Side



- CWI = Cold Water inlet 1 (cleaning)
- D = Drain
- EI = Electrical inlet (power)

Top



### Electric

<b>Supply voltage:</b>	
660034 (LV300R)	400 V/3N ph/50 Hz
<b>Total Watts:</b>	1.2 kW

### Key Information:

<b>Usable well capacity:</b>	300 lt
<b>Load per cycle - light vegetables:</b>	10 kg
<b>Load per cycle - heavy vegetables:</b>	40 kg
<b>External dimensions, Width:</b>	1500 mm
<b>External dimensions, Depth:</b>	900 mm
<b>External dimensions, Height:</b>	850 mm
<b>Shipping weight:</b>	248 kg